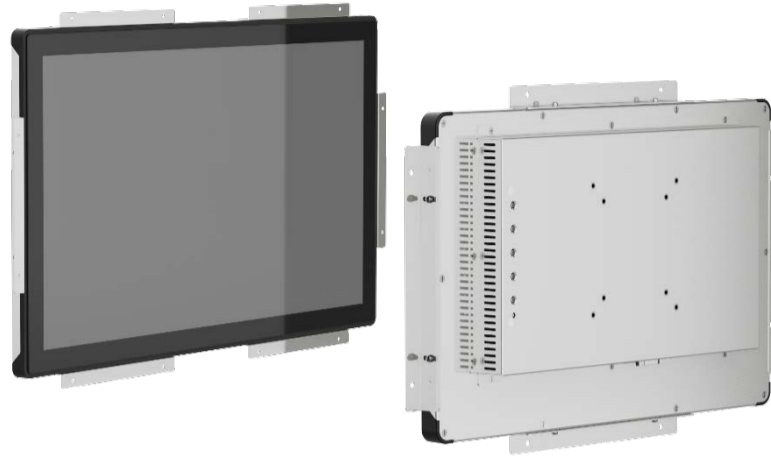


Vantron TMO Series Open-frame Touch Monitors

Quick Installation Guide



Version: 1.1

© Chengdu Vantron Technology Co., Ltd. All rights reserved.

US Office: Vantron Technology, Inc.

Address: 48434 Milmont Drive, Fremont, CA 94538

Tel: (650) 422-3128

Email: sales@vantrontech.com

China Office: Chengdu Vantron Technology Co., Ltd.

Address: 6th Floor, 1st Building, No.9, 3rd WuKe East Street, WuHou District, Chengdu,
P.R. China 610045

Tel: 86-28-8512-3930/3931, 8515-7572/6320

Email: sales@vantrontech.com.cn

General Safety Instructions

For your safety and prevention of damage to the Product, please read and observe carefully the following safety instructions prior to installation and operation. Keep this guide well for future reference.

- Do not disassemble or otherwise modify the Product. Such action may cause heat generation, ignition, electronic shock, or other damages including human injury, and may void your warranty.
- Keep away from heat source, such as heater, heat dissipater, or engine casing.
- Do not insert foreign materials into the openings of the Product as it may cause the Product to malfunction or burn out.
- Use only the adapter and power cord that are approved for use with this Product. Otherwise, it may cause fire or explosion.
- Be sure that nothing rests on the power cable and that the cable is located at a place without risk of trips.
- Cut off the power before inspection of the Product to avoid human injury or product damage.

ESD Precautions

While setting up an electronic system or handling electronic components, certain precautions and proper handling procedures should be followed to prevent ESD-induced failures. Careless handling of ESDS components can degrade their reliability and life expectancy.

Electrostatic discharge (ESD) events can harm electronic components inside the Product. Under certain conditions, ESD may build up on your body or an object, such as a peripheral, and then discharge into another object, such as the Product. To prevent ESD damage, you should discharge static electricity from your body before you interact with any of the Product's internal electronic components.

You can protect against ESD and discharge static electricity from your body by touching a metal grounded before you interact with anything electronic component on the Product. When connecting a peripheral to the Product, you should always ground both yourself and the peripheral before connecting it to the Product. In addition, as you open the Product for maintenance, periodically touch a metal-grounded object to remove any static charge your body may have accumulated.

Disclaimer

While all information contained herein has been carefully checked to assure its accuracy in technical details and typography, Vantron does not assume any responsibility resulting from any error or features of this manual, nor from improper uses of this manual or the software.

It is our practice to change part numbers when published ratings or features are changed, or when significant construction changes are made. However, some specifications of the Product may be changed without notice.

Please refer to the **user manual** of this series for more information on safety cautions and regulatory compliance statements.

1. COMPONENT CHECKLIST

Check if all components are available:

- Touch monitor
- Mounting brackets
- Power adapter & power cable (not applicable to TMO07-DV & TMO101-DV)
- USB cable
- HDMI cable/VGA cable/DP cable (DP cable applicable only to TMO215, TMO238 & TMO270)

Note: Actual accessories might vary slightly from the list above as the customer order might differ from the standard configuration options.

2. INSTALL THE TOUCH MONITOR

2.1 Side mount

Use the mounting brackets and screws to install the touch monitor to the desired place, and secure the screws;



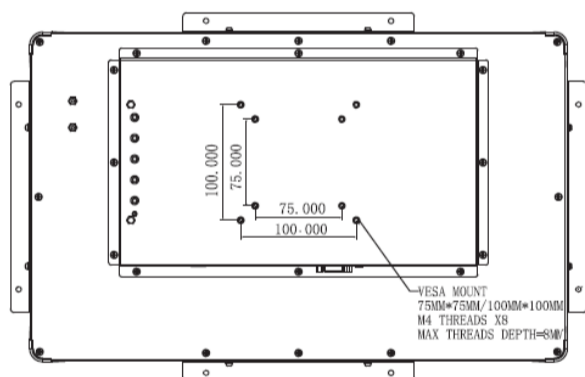
Drawing for illustration only. Number of the brackets depends on the product model.

Screw specification:

- M3 screws
- Thread depth: 6mm

2.2 VESA mount

Vantron offers two VESA patterns on the back of the touch monitor: 75mm x 75mm and 100mm x 100mm.



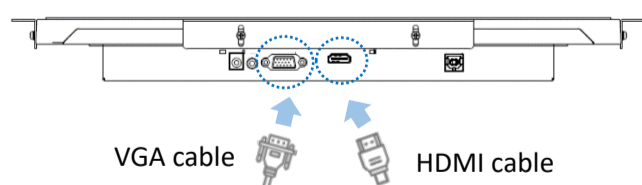
Drawing for illustration only. The VESA pattern on TMO101 is 75mm x 75mm.

Screw specification:

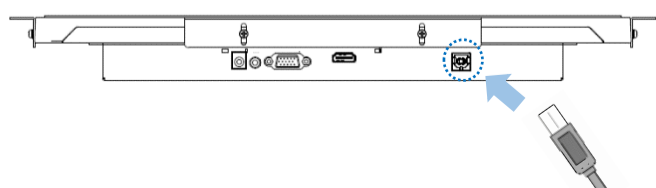
- M4 screws
- Thread depth: 8mm

3. CONNECT THE CABLES

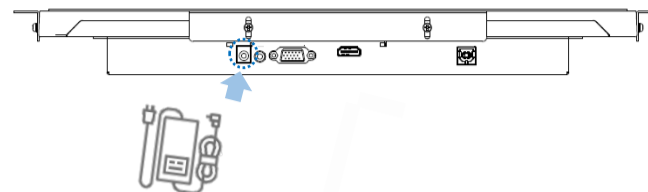
- Connect the video connectors of the touch monitor and the video source with the HDMI/VGA/DP cable(s);



- Connect the USB port of the touch monitor and the PC/master device (e.g., Vantron IBOX3588) with the USB cable to enable the touch control;



- Plug in the audio cable, if needed (only applicable to TMO156 & TMO190);
- Connect a 12V DC power supply to the power jack of the touch monitor and the LED indicator will turn solid red to get into the sleep mode;



- Wait about 2-3 seconds and the LED indicator will turn solid green if the PC/master device connected to functions properly;
- Press the OSD power button on the back of the monitor to power off the touch monitor.

▶ TMO07-DV and TMO101-DV only have an HDMI interface and a USB 3.0, and are powered via the USB cable connected to the PC/master device. They do not offer OSD control keys or related functions. Therefore, the above steps are not applicable to the models.

4. LED INDICATOR AND OSD CONTROL

The relationship between the power indicator and the touch monitor status is as follows:

Indicator status	Touch monitor status
OFF	OFF
Solid red	SLEEP
Solid green	Working

OSD control keys function as follows (N/A to TMO07-DV & TMO101-DV):

Key	OSD not displayed	OSD displayed
Menu	OSD menu	Get into the submenu of a selected parameter
Up	OSD Brightness submenu (Increase brightness)	Increase value of selected parameter/ Move to next menu upwardly
Down	OSD Brightness submenu (Decrease brightness)	Decrease value of selected parameter/ Move to next menu downwardly
Select	NA	Return to previous OSD menu

5. TROUBLESHOOTING

Please refer to the following solutions/suggestions in case you encounter a trouble during use of the touch monitor.

If the trouble is not covered here or if the trouble persists, please contact your sales representative. Please note that the solutions/suggestions are intended for models other than TMO07-DV & TMO101-DV. Should you have any trouble with TMO07-DV and TMO101-DV, please contact your sales representative.

- The touchscreen display does NOT respond when the system is turned on.
 - Check if the DC power adaptor is properly connected and functions well.
- The touch monitor is dim.
 - Use the OSD control keys to adjust the brightness or contrast of the display.
- The touch monitor does NOT wake up automatically and the indicator is red.
 - Tap the screen and wait for the monitor to respond. If it fails, press the power button, or re-connect the power supply, and wait a few seconds till the indicator turns green.
- The image is NOT properly displayed.
 - Adjust the resolution/timing mode of the PC/master device to be within the allowable ranges specified for the touch monitor. Or, adjust the display parameters manually with the OSD control key.